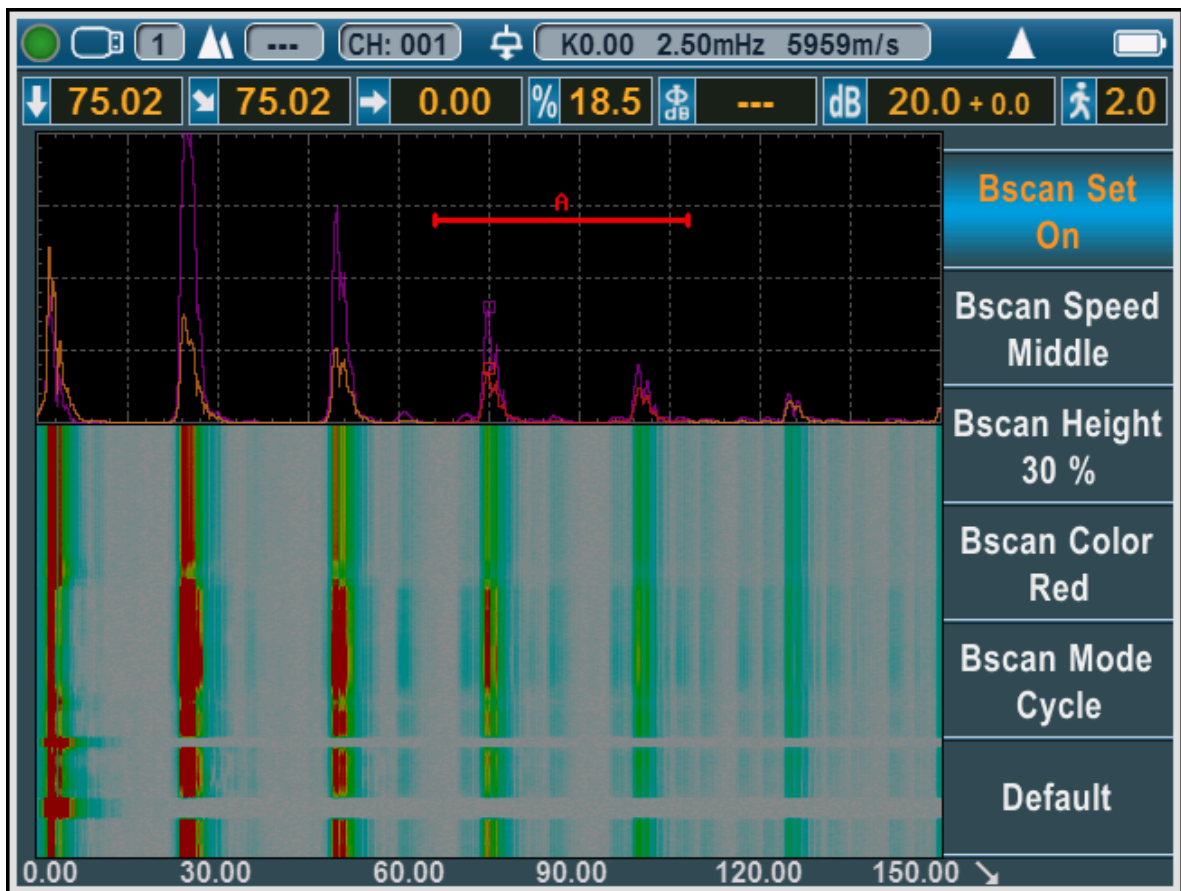
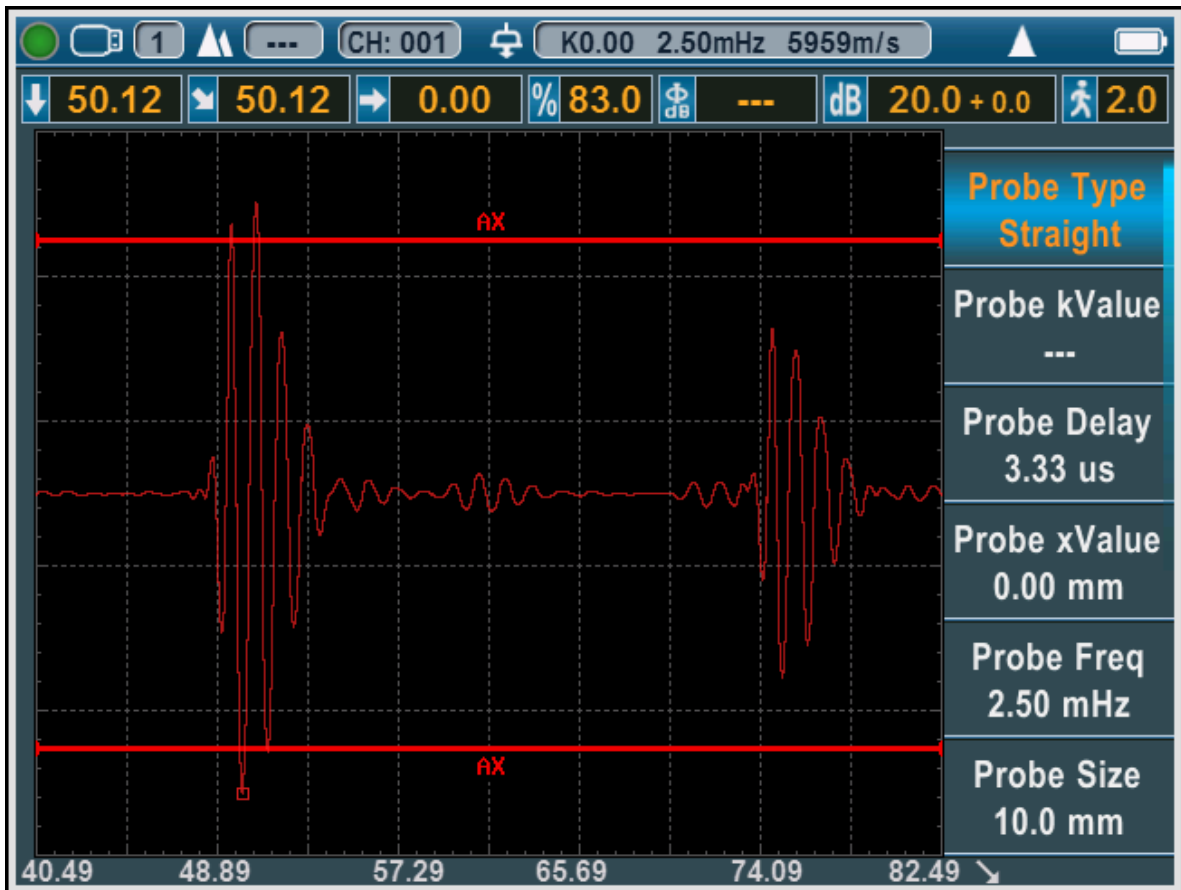
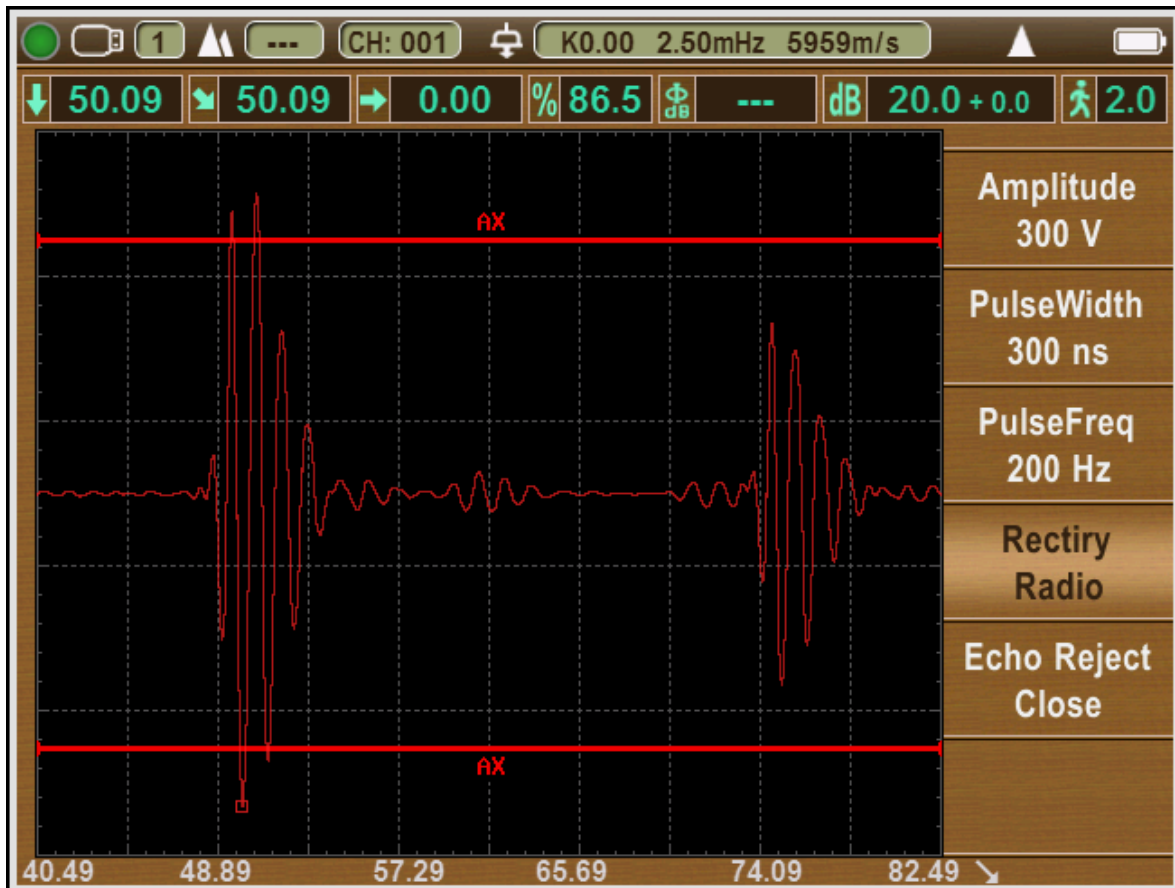




**Eddysun EUT-202A Ultrasonic Flaw Detector**





NAME	RPT170118030227						
DATE	2017.01.18 03:02:27						
PROBE	Probe						
<b>RESULT</b>							
S_VALUE	75.05 mm						
D_VALUE	75.05 mm						
P_VALUE	0.00 mm						
H_VALUE	35.0 %						
V_ERS	---						
UNIT	Metric						
<b>PARAMETER</b>							
ProbType	Straight	Range	150.0 mm	Trigger	Peak	Standard	-----
PROBE VK	0.00	Sound Vel	5959 m/s	Base Gain	20.0 dB	ERS-REF	-----
P-Delay	3.33 us	D-Delay	0.00 us	Scan Gain	0.0 dB		
ProbFreq	2.50 mHz	Thickness	100.0 mm	Comp Gain	0.0 dB		
X-Value	0.00 mm	Diameter	-----	PulsAmp	300 V		
ProbDamp	400 Ω	Correct	Off	PulsWidth	300 nS		
Rectify	Full	Reject	Close	PulsFreq	200 Hz		
ProbSize	10.0 mm	Gate Sel	Gate_A	CurveType	-----		

## Introduction

EUT-202A is a portable industrial digital ultrasonic flaw detector that can detect, locate, evaluate and diagnose various defects (cracks, inclusions, pores, etc.) in the workpiece quickly, conveniently, without damage, and accurately. It can be used both in the laboratory and on the engineering site. EUT-202A ultrasonic flaw detector can be widely used in manufacturing, iron and steel metallurgy, metal processing, chemical industry and other fields that require defect detection and quality control. It is also widely used in online safety inspection and Life assessment in the fields of aerospace, railway transportation, boilers and pressure vessels, etc.

The instrument can be widely used in locating and sizing hidden cracks, voids, disbands, and similar discontinuities in welds, forgings, billets, axles, shafts, tanks and pressure vessels, turbines, and structural components.

## Features of the Instrument

The core hardware is designed with ARM+FPGA, and the software uses a highly reliable multitasking operating system, which greatly improves the function, portability, durability and reliability of the instrument.

This instrument uses a master-slave menu, and is designed with shortcut keys and a digital rotary knob. The instrument is light and portable, and can be held with one hand.

### ● Display

Full-digital multi-color high-resolution (640×480 pixels) multi-color TFT LCD display. The waveform display is more delicate.

4 operating interface styles can be selected according to the environment.  
The LCD with fast 60 Hz update. Able to display subtle waveform changes.  
The LCD brightness can be set freely.

### ● Shape

The aluminum metal housing is strong and durable, and the electromagnetic shielding performance is very good.

360-degree rotating damping bracket and rubber sheath are easy to use.

Tempered glass panel, extremely hard, wear-resistant and scratch-resistant

### ● Screenshot and PDF flaw detection report

Real-time screenshot of all pages and flaw detection reports, and save them as BMP pictures to USB disk, which can be set as color or grayscale pictures.

Export the flaw detection report as a PDF file and save it to a USB disk for easy archiving and printing.

All contents of the PDF file can be customized according to user needs.

BMP pictures and PDF files can be viewed on a computer or mobile phone.

- **Range**

Up to 15000mm in steel; range selectable in fixed steps or continuously variable. Suitable for use on large work pieces and in high-resolution measurements.

- **Pulser**

Pulse Energy selectable among 100V,200V, 250V,300V,350V, 400V and 500V.

Pulse Width tunable from 0.1 $\mu$ s to 0.5  $\mu$ s to match the probes with different frequency.

Pulse Repetition Frequency adjustable from 20 Hz to 2 KHz.

Damping selectable among 50  $\Omega$  , 150  $\Omega$  , 250  $\Omega$  and 500  $\Omega$  for optimum probe performance

Probe selection: single crystal probe, dual crystal probe, special angle probe, penetrating probe, climbing probe.

- **Receiver**

Sampling: 16 digit AD Converter at the sampling speed of 320 MHz

Rectification: Positive Halfwave, Negative Halfwave, Fullwave and RF

Bandwidth: 0.2MHz to 20MHz capability with selectable frequency ranges (automatically set by the instrument) to match probe for optimum performance.

Gain: 0 dB to 110 dB adjustable in selectable steps 0.1 dB, 2 dB, 6 dB.

- **Gates**

Two fully independent gates offer a range of measurement options for signal height or distance using peak triggering.

The echo-to-echo mode allows accurate gate positioning for signals which are extremely close together.

Gate Start: Variable over entire displayed range

Gate Width: Variable from Gate Start to end of displayed range

Gate Height: Variable from 0 to 99% Full Screen Height

Alarms: Threshold positive/negative with LED Flash.

- **Memory**

The instrument has a built-in large-capacity memory, and data and files will not be lost due to power failure of the instrument.

Memory of 500 channel files to store calibration setups and probe parameter.

Memory of 1000 wave report files to store A-Scan wave and settings.

All the files can be stored, recalled and cleared.

The channel settings and report files can be exported via USB disk, and the information can also be stored in unlimited amounts via USB memory.

- **Video Recorder**

Video Recorder is useful in many situations, it is very convenient for those who want to analyze the inspection activities later.

The instrument can record the test process and save it as a video file, which can be played back through the instrument or special software. It supports up to 10 video files, and each video file can be up to 5 minutes long.

If you choose to save the video file to the USB disk, the number and duration of the video file

will not be limited.

Recording and replaying the testing process provides great convenience for future study and analysis of flaw detection.

Video playback supports pause, fast forward, fast rewind, and stop functions.

## Functions

- Auto calibration: Automated calibration of probe zero offset, probe angle (K value) and material velocity.
- Flaw Locating: Live display Sound-path, Projection (surface distance), Depth, Amplitude,
- Flaw sizing: Automatic flaw sizing using AVG or DAC, speeds reporting of defect acceptance or rejection.
- Digital Readout and Trig. Function: Thickness/Depth can be displayed in digital readout when using a normal probe and Surface Distance and Depth are directly displayed when angle probe is in use.
- DAC/AVG: The curve is automatically generated, and the sampling points can be compensated and corrected. The curve automatically floats with the gain, automatically expands with the detection distance, and automatically moves with the delay time. It can display the AVG curve of any aperture.
- AWS D1.1. Choosing this standard can reduce manual calculations and improve detection efficiency.
- Curved Surface Correction feature.
- Crack Height Measure function.
- Gate Magnify : spreading of the gate range over the entire screen width.
- Video Recording and playback.
- Auto-gain function
- Envelope: Simultaneous display of live A-scan at 60 Hz update rate and envelope of A-scan display
- Peak Hold: Compare frozen peak waveforms to live A-Scans to easily interpret test results.
- Peak mark: capture and mark the peak in real time
- Echo coding: display 1~9 echo display area in different colors, used to analyze the defect position.
- A Scan Freeze: Display freeze holds waveform and test distance data.
- B Scan display feature. Intuitively display the defect shape of the workpiece and the detection result is more intuitive.

## Real Time Clock

The instrument clock keeps running tracking the time.

## Communication

Two High speed USB2.0 port. Two USB modes can be selected: U-DISK and U-BRIDGE. In U-DISK mode, channel Configuration files, flaw report files, screenshot pictures and recorded movies can be saved to USB-DISK. In U-BRIDGE mode, the instrument

exchanges data with DataPro Software.

### **Battery**

Built-in large-capacity and high-performance lithium-ion battery.

The continuous working time more than 12 hours. 4-6 hours typical recharge time.

### **Knob**

Operating adjustments are easily and quickly made using the rotary knob.

### **software upgrade**

The software can be easily upgraded through USB-DISK. The upgrade will not cause damage to the machine.

## **Specifications**

- Measuring Range: 0 to 15000 mm, at steel velocity
- Pulse Repetition Frequency ranges from 20 Hz to 2000 Hz
- Material Velocity: 1000 to 20000m/s
- Pulse Repetition Frequency ranges from 20 Hz to 2000 Hz
- Dynamic range: 40dB or more
- System Linearity: Horizontal: +/-0.2% FSW,  
Vertical: 0.25% FSH, Amplifier Accuracy +/-1 dB.
- Resolving Power: 40dB or more
- Sensitivity Leavings: more 50dB(Deep 200mmΦ2 flat-bottomed hole)
- Reject (suppression): 0 to 80% full screen height
- Noise: less than10%
- Gate Monitors: Two independent gates controllable over entire sweep range
- Gain: 110 dB max in selectable resolution 0.1, 1.0, 2.0, 6.0 dB.
- Bandwidth (amplifier bandpass ): 0.2 to 20 MHz
- Pulse Displacement: 32dB or more
- Display Delay: -20 to 3400 μs
- Probe Delay/Zero Offset : 0 to 99.99μs
- Test Modes: Pulse echo, dual element and thru-transmission
- Pulser: Tunable Wave Pulser
- Pulse Energy: 100V, 200V, 250V, 300V, 500V selectable
- Rectification: Positive half wave, negative half wave, full wave, RF
- Units: Inch or millimeter
- Transducer Connections: BNC or LEMO
- Power Requirements: AC Mains 100-240 VAC, 50-60 Hz
- Operating Temperature: -10°C to 50°C, Storage Temperature: -30°C to 50°C

**Standard Delivery : Main Unit , USB disk, Strap, Carrying Case**